

High Pressure Permanent Bridge Plug

The Omega High Pressure Permanent Bridge Plugs have proven to be efficient, reliable and cost effective for our customers.

The plugs can be conveyed via several methods and have excellent running characteristics along with a secure setting mechanism. Plug setting can be achieved with various industry available wireline pressure setting tools.

Standard pressure rating is 10,000psi for plugs up to 7 5/8" reducing to 2,000psi for 20" casing plugs. Temperature rating for all plugs is 325°F.

The plugs are designed for rapid drill-out while maintaining sufficient strength during the set and are available for 2 3/8" through 20" tubing/casing.

Technical Specifications

High Pressure Permanent Bridge Plug

Casing		Plug	Setting Range		Setting Tool		Pressure Rating (psi)	Temperature Rating (°F)
OD	WT. (LBS/FT)	OD	Min.	Max	Baker	GO		
2-3/8"	3.3-5.9	1.71	1.867	2.107	5	-	10,000	325
2-3/8"	3.3-5.9	1.71	1.867	2.107	-	1-11/16"	10,000	325
2-7/8"	6.4-6.5	2.10	2.280	2.563	5	-	10,000	325
2-7/8"	6.4-6.5	2.10	2.280	2.563	-	1-11/16"	10,000	325
2-7/8"	6.4-6.5	2.10	2.280	2.563	-	2-1/8"	10,000	325
3-1/2"	5.7-10.2	2.75	2.867	3.258	5	-	10,000	325
3-1/2"	5.7-10.2	2.75	2.867	3.258	10	-	10,000	325
3-1/2"	5.7-10.2	2.75	2.867	3.258	-	1-11/16"	10,000	325
3-1/2"	5.7-10.2	2.75	2.867	3.258	-	2-1/8"	10,000	325
4"	5.6-14	3.12	3.340	3.732	10	2-1/8"	10,000	325
4-1/2"	9.5-16.0	3.50	3.826	4.090	10	3-1/2"	10,000	325
4-1/2"	9.3-13.5	3.71	3.920	4.560	10	3-1/2"	10,000	325
5"	11.5-21	3.71	3.920	4.560	10	3-1/2"	10,000	325
5-1/2"	13-25	4.24	4.580	5.047	20	3-1/2"	10,000	325
5-3/4"	22.5-25.2	4.24	4.580	5.047	20	3-1/2"	10,000	325
6"	14-16	4.75	5.140	5.595	20	3-1/2"	10,000	325
6"	10.5-12	5.34	5.595	6.366	20	3-1/2"	10,000	325
6-5/8"	34	4.75	5.140	5.595	20	3-1/2"	10,000	325
6-5/8"	17-34	5.34	5.595	6.366	20	3-1/2"	10,000	325
6-5/8"	17-22	5.61	5.989	6.655	20	3-1/2"	10,000	325
7"	23-40	5.34	5.595	6.366	20	3-1/2"	10,000	325
7"	17-35	5.61	5.989	6.655	20	3-1/2"	10,000	325
7-5/8"	20-39	6.09	6.623	7.263	20	3-1/2"	10,000	325
8-5/8"	24-49	6.96	7.511	8.248	20	3-1/2"	8,000	325
9-5/8"	29.3-53.5	7.71	8.435	9.063	20	3-1/2"	8,000	325
10-3/4"	54-81	8.71	9.250	9.784	20	3-1/2"	5,000	325
10-3/4"	32.7-51	9.5	9.850	11.150	20	3-1/2"	5,000	325
11-3/4"	38-60	9.5	9.850	11.150	20	3-1/2"	5,000	325
13-3/8"	77-102	11.56	11.633	12.464	20	3-1/2"	3,000	325
13-3/8"	48-72	12.00	12.347	12.715	20	3-1/2"	3,000	325
16"	65-109	14.25	14.688	15.230	20	3-1/2"	2,000	325
20"	76-96.5	18.375	18.730	19.124	20	3-1/2"	2,000	325
20"	113-169	18.375	18.730	19.124	20	3-1/2"	2,000	325



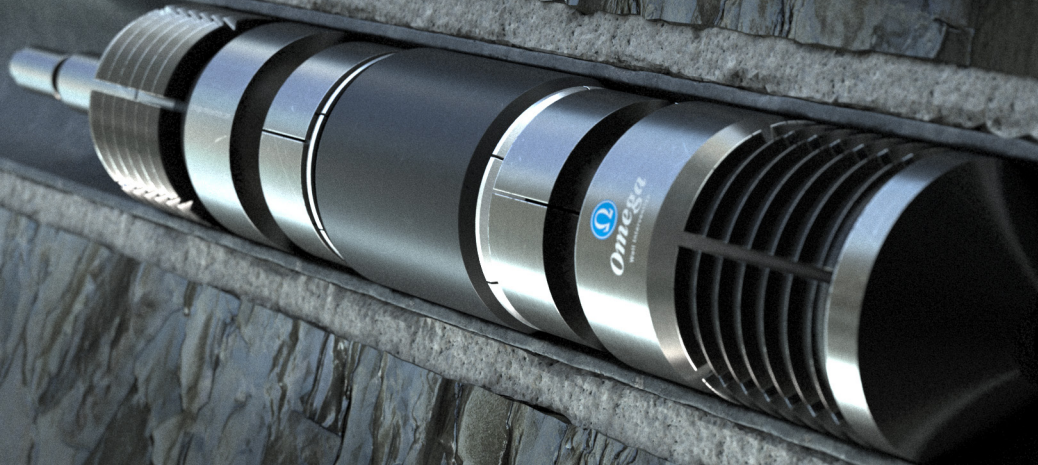
* All pressure ranges have been tested from above and below the plug.

* Available in higher temporary ratings on request.

Features - Benefits

omega-intervention.com

High Pressure Permanent Bridge Plug



FEATURES & BENEFITS

- Wireline, slickline, coiled tubing, jointed pipe conveyed
- Cast iron construction = Drillable
- One piece slips (hardened to depth of wicker only)
- Sets in any grade casing including P-110
- Form-fitting metal back-ups prevent rubber extrusion
- For temporary or permanent service
- Ratcheting lock ring holds setting force
- Available in higher temperature ratings on request

Omega Well Intervention Ltd, Omega House, Kirkhill Road, Kirkhill Industrial Estate, Dyce, Aberdeen, AB21 0GQ
Tel: +44 (0)1224 772744, Email: info@omega-intervention.com
www.omega-intervention.com

ED-012 R2.2

