



7" 10K V-MAX Retrievable Bridge Plug

The 7" 10K V-MAX Retrievable Bridge Plug (RBP) is a high performance monobore plugging device which can be set at any required depth in the tubing or casing.

Using state of the art metal 3D additive manufacturing processes the 7.0" 10K V-MAX Retrievable Bridge plug utilises an innovative expandable back-up design to bridge extrusion gaps between the tubing and plug OD. This allows the element to reach its full sealing potential.

The RBP is deployed, equalised and retrieved using conventional well intervention methods. Deployment is achieved in one run, as is the subsequent equalisation and retrieval of the plug. This enables a reduction in both well intervention risk and subsequent operational cost.

The plug features bi-directional slips which anchor the plug to the casing/tubing/liner ID prior to pack-off of the element to form the pressure seal.

The large 'through bore' design ensures full equalisation occurs prior to retrieval. This also means that secondary devices, such as Omega's remotely activated equalising valves, can be installed onto the lower section of the RBP.

The 7" 10K V-MAX Retrievable Bridge Plug is fully qualified to the API 11D1 V0 testing standard.

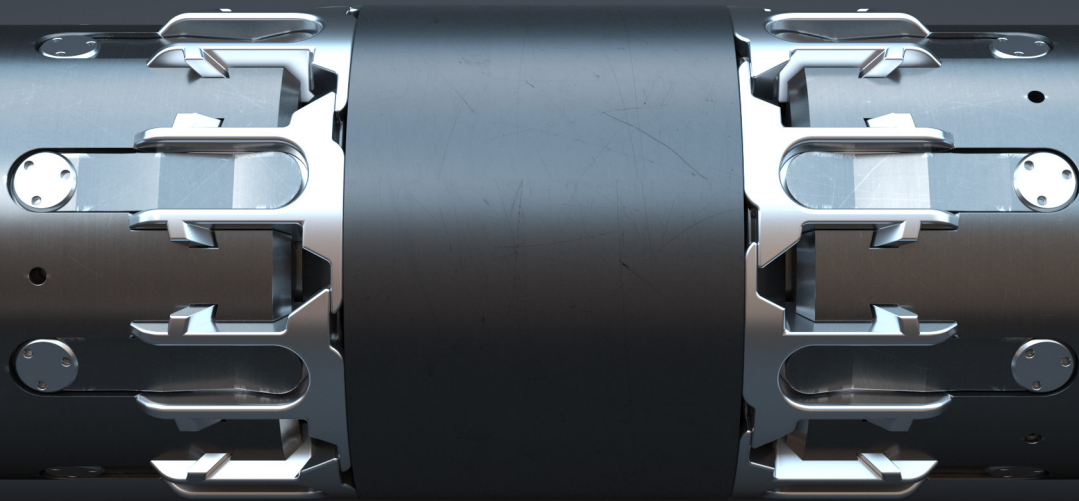
Technical Specifications

omega-intervention.com

7" 10K V-MAX Retrievable Bridge Plug

Technical Specifications

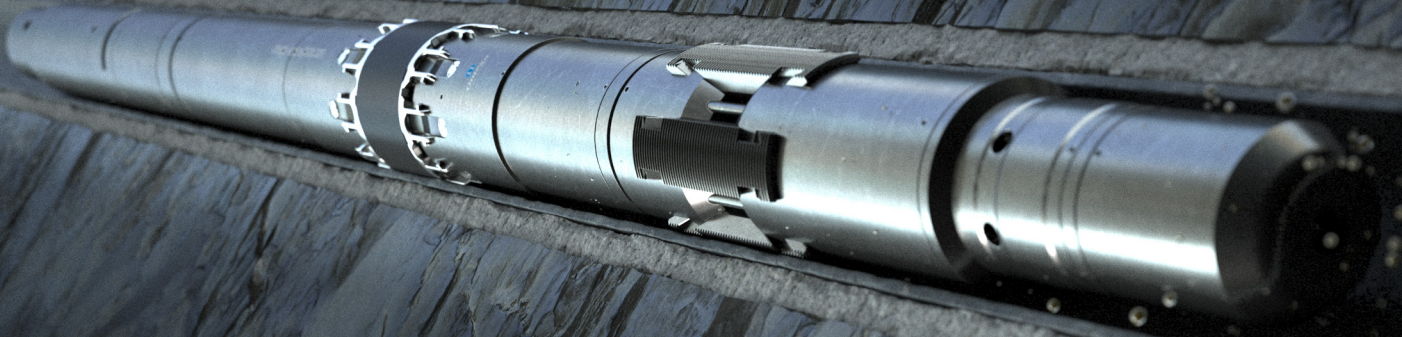
Max OD	5.720" (145.288 mm)
Min ID	1.378" (35.00 mm)
Length	2.939 Meters (9.64')
Pressure Rating	10,000 psi
Temperature Range	177° - 37°C (350°F - 98°F)
Temperature Swing	140°C (252°F)
Setting Load	50,000 lbs
Rating	API 11D1 V0 rated
Element Type	FKM Sealing Element
H2s Resistance	Up to 20%
Tubing Weight	7" 32# Tubing - Other tubing weights on request.
Fish Neck Size	5in GS Profile



Features - Applications - Benefits

omega-intervention.com

7" 10K V-MAX Retrievable Bridge Plug



FEATURES

- Medium expansion slips and element.
- Highly debris tolerant due to innovative equalising/retrieval design.
- Retrieval mechanism enables successful retrieval in one intervention.
- Bi-directional mechanical slips.
- Large slip footprint maximises slip/casing contact area.
- Overall length minimized for restricted access deployment.
- Set using conventional intervention setting tools, such as Omega's Hydrostatic Setting Tool (HST).
- Option to install a lower junk catcher extension in high debris environments.
- Expandable back-up.

APPLICATIONS

- Well barrier during well maintenance and workovers.
- Zonal isolation, water shut off or treatment.
- Pre-installation in completion tail-pipe for packer setting.
- Contingency packer setting.
- Testing of production tubing(s).
- High temperature high pressure sour wells.

BENEFITS

- Increased operational performance due to setting and releasing mechanisms.
- No specialised retrieval tool required - standard GS pulling tool used to equalise and retrieve.
- Optimised slip design reduces stress loading on tubulars.
- Controlled setting action, further enhanced with the Omega HST.
- Through bore design provides secondary functionality and increased debris tolerance.