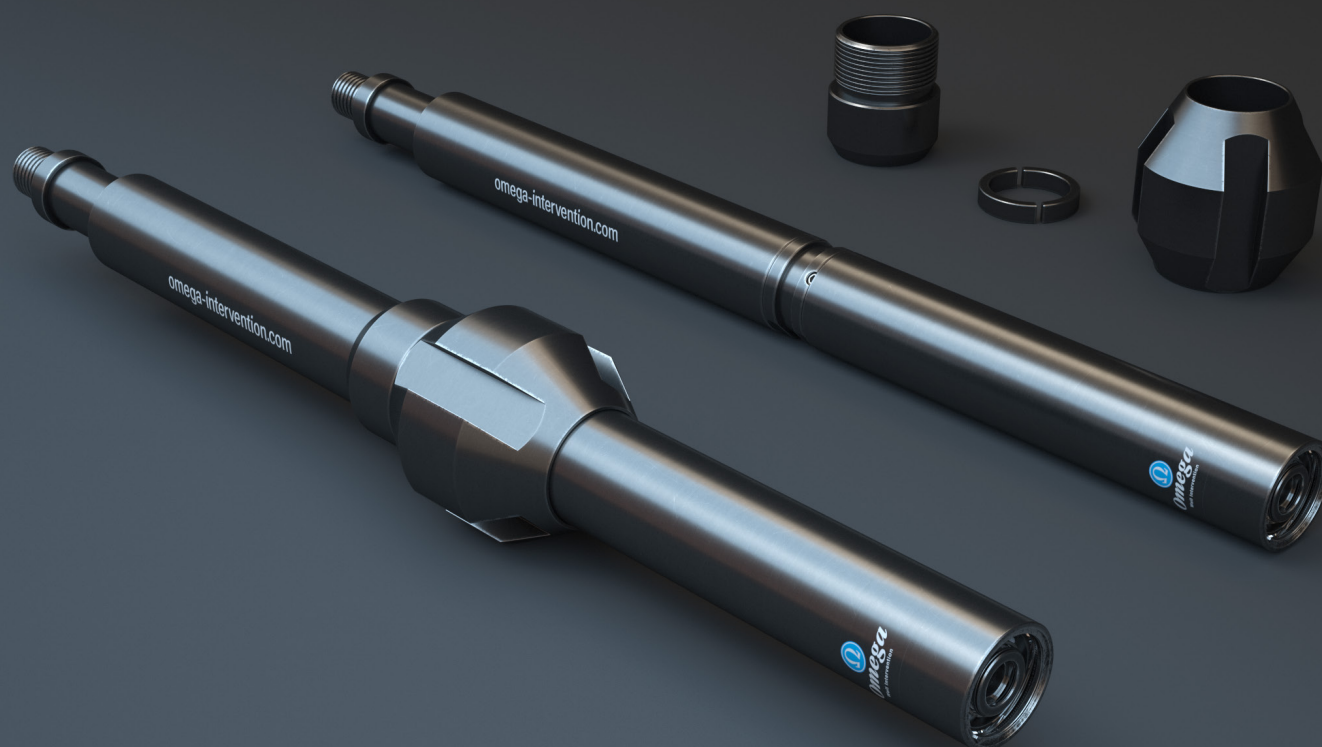


WELL SURVEILLANCE & MONITORING



Downhole Memory Camera

The Omega Downhole Memory Camera allows operators to deploy a camera system without E-line equipment and personnel, or the other specialised equipment required by many alternative systems.

Obtaining images of a wellbore obstruction or wireline fish, allows operators to fully understand what they are actually up against. Validating the downhole issues can help determine the best course of action, increasing the likelihood of a successful intervention whilst reducing the operator's overall intervention risk and associated costs.

As the tool is fully programmable at the well site, the operator can decide when the camera will start capturing images, the time duration between each image and also the total number of images to be captured.

A maximum of 1000 images can be recorded and subsequently downloaded using a laptop and Omega's camera software. The images can then be emailed from location.

The system is transported inside robust Pelican briefcases, ensuring that Omega's downhole memory camera can be safely shipped to location in the fastest possible time frame.

Technical Specifications

Downhole Memory Camera

Technical Specifications	
Camera Tool OD	1.750" (44.45mm)
Fishing Neck Size	1.375"
Max Pressure	7,500 psi
Max Temperature*	120°C (248°F)
Tool Length	21.77" (553mm) (To fishing neck)
Tool Weight	3.64kg (8lbs)

*Rating of camera electronics.

Note:

Overall BHA length may increase if a bow spring centraliser is utilized during deployment of Omega's downhole memory camera.

Contact Omega to discuss well preparation for camera deployments. Ensuring that wellbore environment is optically clean is essential in obtaining good quality images.



Features - Applications - Benefits

omega-intervention.com

Downhole Memory Camera



FEATURES

- Operator programmable delay time, time interval between images and total number of images captured.
- Standard wireline 15/16" sucker rod connection.
- High intensity LEDs illuminate viewing area.
- Detachable battery module, easily replaced on-location.
- High quality Sapphire optical lens.
- Compact design enables deployment in restrictive rig ups.

APPLICATIONS

- Mechanical inspections, such as parted tubing / corrosion / obstructions / restrictions.
- Wireline and drilling fishing operations.
- Gas lift and SCSSV valve inspection.
- Scale and organic build up survey.

BENEFITS

- Highly portable downhole camera system.
- Captures 1000 images per run.
- Deployed on standard slickline wire / coiled tubing.
- May significantly reduce operator intervention costs.