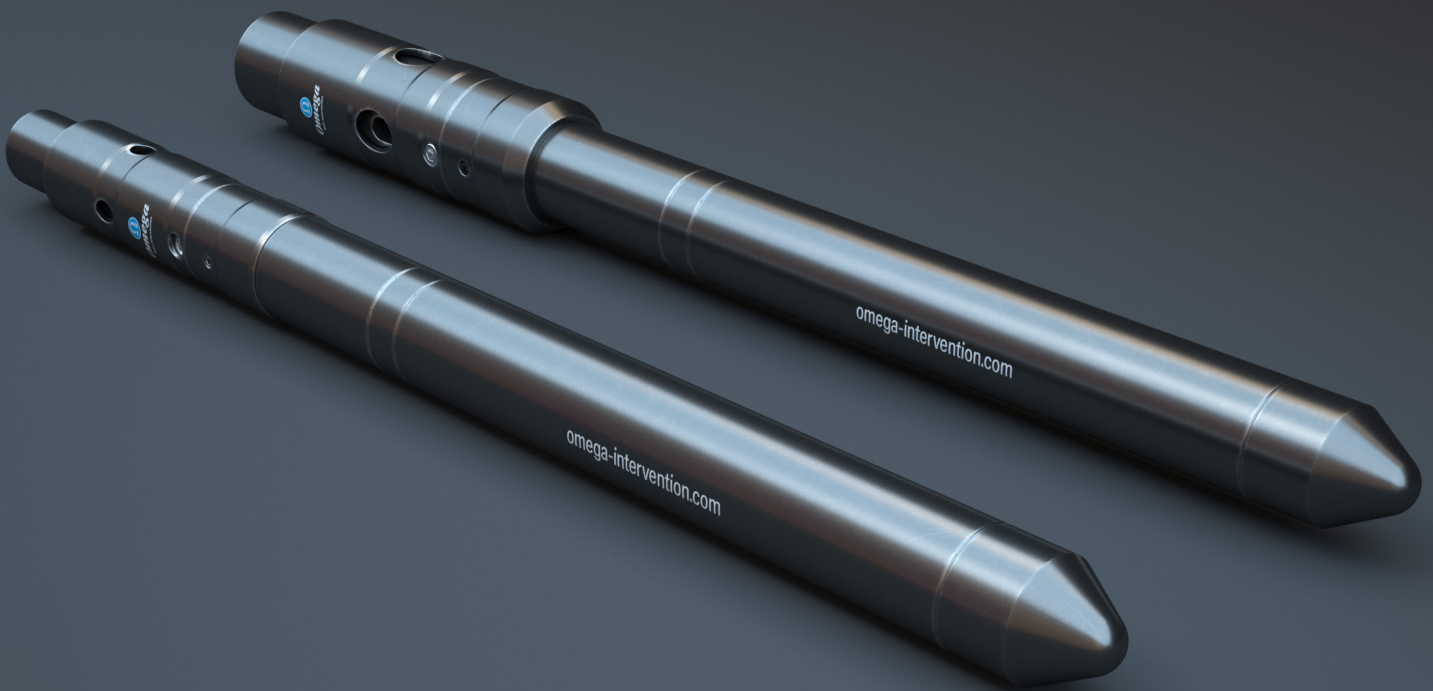


WELL ABANDONMENT



Cement Dump Bailer

The Omega Cement Dump Bailer is a single shot device which has been designed to accurately deliver large volumes of cement/acid/chemicals/sand or proppant to a downhole location via slickline or braided line.

Due to its modular design, the dump bailer actuator can be made up to any number or size of tube sections. The number and diameter of these tubes is dictated by the available rig up height, minimum well bore restriction and the final overall toolstring weight.

Prior to running the tool, the electronic timer is programmed with the desired time delay that should elapse before tool activation. Once the dump bailer is filled and prepared for deployment, the time delay period is started by removing the safety ring and threading the nose cone fully in to the actuator body of the tool. The tool is then run to depth.

Following expiry of the pre-programmed time delay, well pressure enters the tool and acts against an atmospheric chamber to shift the valve sleeve into the fully open position.

The content of the tube sections is then free to drain through the large flow ports on the actuator, depositing it at the desired location.

Technical Specifications

omega-intervention.com

Cement Dump Bailer

Actuator Unit Specifications		
Actuator Size	2.10"	3.00"
Pressure Rating	10,000 psi	15,000 psi
Temperature Rating	165°C	185°C
Flow Area	0.604 in ²	1.940 in ²
Flow Ports	4 x 0.438"	4 x 0.787"

Tubing Specifications		Capacities	
OD	Std No. of Cement Sections	US Gallons	Litres
3.500"	x 3 6ft sections	6.5	24.7
3.250"	x 3 6ft sections	4.6	17.9
3.000"	x 3 6ft sections	3.9	14.7
2.750"	x 3 6ft sections	3.4	12.8
2.500"	x 3 6ft sections	2.4	8.9
2.250"	x 3 6ft sections	1.7	6.5
2.125"	x 3 6ft sections	1.7	6.5

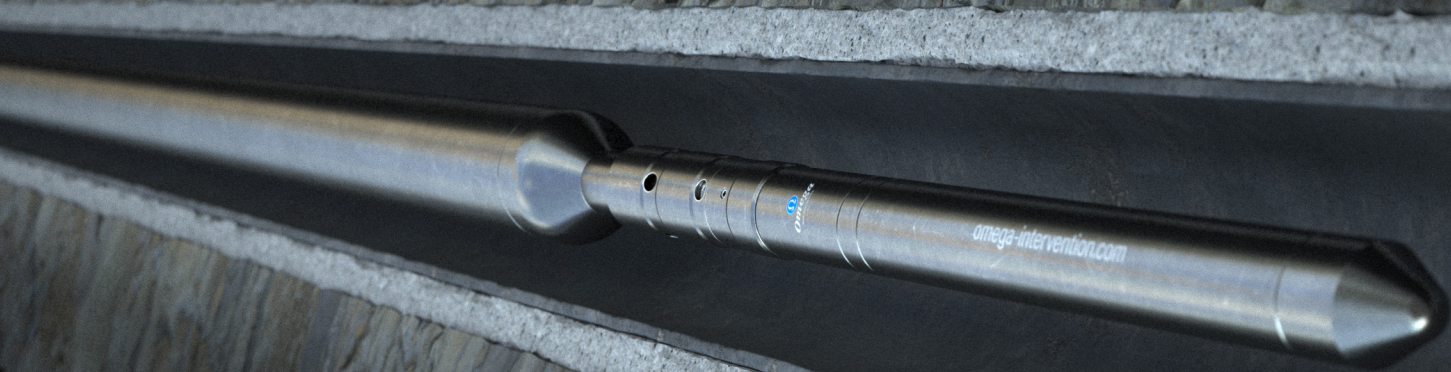
Please Note: Omega can supply other sizes of cement tubes on request.



Features - Applications - Benefits

omega-intervention.com

Cement Dump Bailer



FEATURES

- High volume capacity, modular filler tubes.
- Field proven Omega electronic timer.
- System rated up to 185 deg C & 15,000psi.
- Variable delay time.
- No tagging or jarring action required to actuate.
- Top & bottom filling options.

APPLICATIONS

- Slickline deployment of cement/sand/proppant above barrier plugs.
- Well abandonments.
- Scale removal from safety valves/plugs/Xmas tree using acid/chemicals.
- Hydrate removal.
- Deployment of tracer fluids.

BENEFITS

- Deployed via slickline, reducing E-line requirement.
- Accurate deployment of sand/proppant/cement/acid/Methanol.
- No pyrotechnics required to operate tool.
- Modular design facilitates access in restricted height deployment.

Omega Well Intervention Ltd, Omega House, Kirkhill Road, Kirkhill Industrial Estate, Dyce, Aberdeen, AB21 0GQ
Tel: +44 (0)1224 772744, Email: info@omega-intervention.com
www.omega-intervention.com

ED-012 R2.2

