

# Horizontal Self Cocking Jar

## Technical Data Sheet

Assembly : 401-0209-001

The Omega Horizontal Self Cocking Jar is a long stroke hydraulic jar which has the unique capability of re-setting itself in a highly deviated or horizontal wellbore.

Whereas standard Hydraulic, spang or spring jars rely on gravity to re-set, the Omega Horizontal Jar incorporates a re-setting spring which provides sufficient re-setting force independent of deviation.

Originally designed to be run with the Omega Tractor, the Horizontal Jar provides greater flexibility to many non-tractor operations.

A unique feature of the Omega Horizontal Jar is the viscosity compensation metering system which maintains the metering time near constant regardless of the temperature.

The pressure balanced design offers a jar that will operate in nearly all environments without the need to change oil between runs or for differing well conditions.

When deployed with the Omega Hi-Deviation Tubular Jar & Roller Subs the Omega Horizontal Jar has operated in deviations of over 90 degrees.

## Features

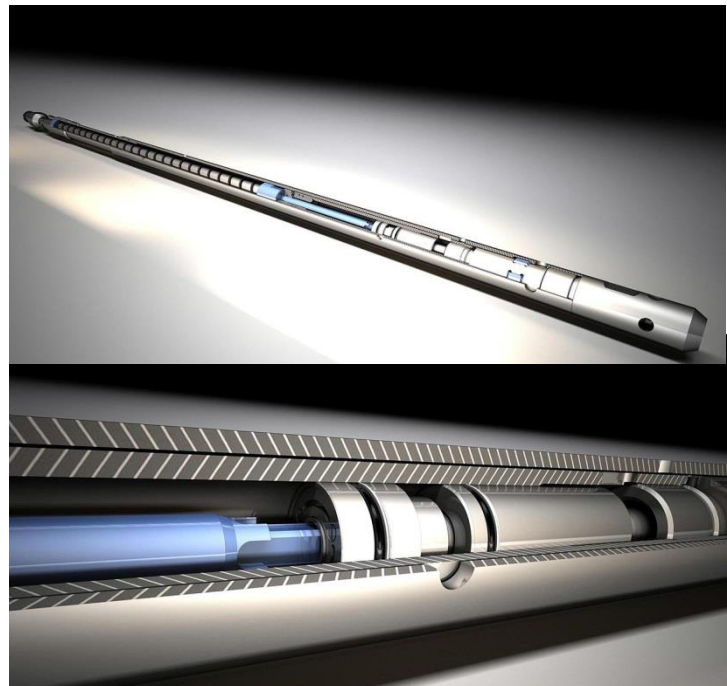
Re-setting spring.  
Sealed hydraulic unit.  
Compensating metering system.  
Matched accelerators available.

## Applications

Standard and Hi-Deviation wireline intervention.  
Opening sliding side doors.  
Utilised with Omega Roller Subs, Catapults & Tractors.  
Wireline fishing operations.

## Benefits

Self cocking mechanism reduces intervention time, risks, and costs.  
Reliable firing mechanism over industry standard Hydraulic Jars.  
Does not require to be `pre-set` at surface. Activated via an overpull.  
Hydraulic Cartridge design eliminates `gassing up` issues commonly seen in hydro jars.



HI-DEVIATION



**Omega**

*Omega Completion Technology Ltd.*

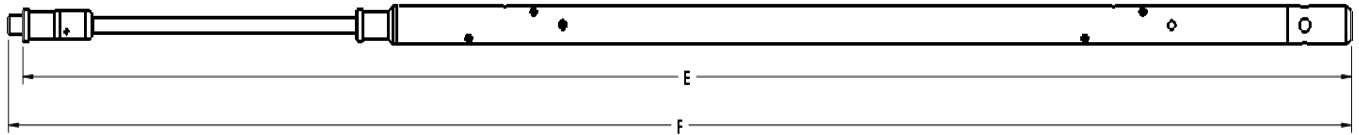
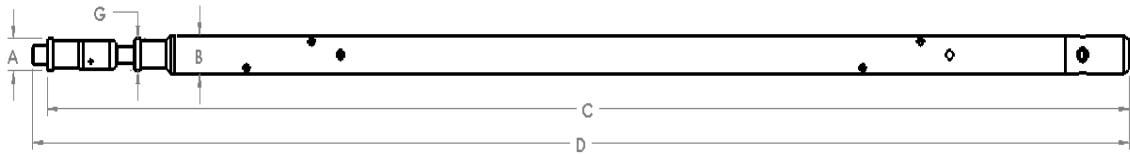


# Horizontal Self Cocking Jar

Technical Data Sheet

Assembly : 401-0209-001

Description	2.09" OD Horizontal Self Cocking Jar
Assembly Number	401-0209-001
Connections	15/16" Sucker Rod Pin x Box
Tool Max. OD	2.09"
Fishing Neck	1.38" (Primary & Secondary)
Overall Length	75.3" Closed
Overall Length	92.3" Open
Stroke (Effective)	14.5"
Weight	45 kgs
Service	Standard
Max. Tensile Rating	46,400 lbs



Dimensional Data	
A	1.38"
B	2.09"
C	74.3"
D	75.3"
E	91.3"
F	92.3"
G	1.38"

HI-DEVIATION

Omega Completion Technology Ltd  
 Omega House  
 Kirkhill Road  
 Kirkhill Industrial Estate  
 Dyce  
 Aberdeen  
 AB21 0GQ  
 Tel: +44 (0)1224 772744  
 Fax: +44 (0)1224 775667  
 Email: info@omega-completion.com  
<http://www.omega-completion.com>