

V-Zero™ Retrievable Bridge Plug

The V-Zero™ Retrievable Bridge Plug (RBP) is a high performance monobore plugging device which can be set at any required depth in the tubing or casing.

The V-Zero™ RBP is deployed, equalised and retrieved using conventional well intervention methods.

Deployment is achieved in one run, as is the subsequent equalisation and retrieval of the plug. This enables a reduction in both well intervention risk and subsequent operational cost.

The plug features bi-directional slips which anchor the plug to the casing/tubing/liner ID prior to pack-off of the element to form the pressure seal, making it ideal for cross flow applications.

The large 'through bore' design ensures full equalisation occurs prior to retrieval. This also means that secondary devices can be installed onto the lower section of the RBP such as Omega's remotely activated equalising valves.

Omega ISO 14310 V0 qualifies the V-Zero™ Retrievable Bridge Plug range to 5,000 psi @ 150° C - 4 ° C. Contact your omega representative for more specific and updated testing information.

Features

Medium expansion slips and element.

Highly debris tolerant due to innovative equalising/retrieval design.

Retrieval mechanism enables successful retrieval in one intervention.

Bi-Directional mechanical slips.

Large slip footprint maximises slip/casing contact area.

Overall length minimized for restricted access deployment.

Set using conventional intervention setting tools, such as Omega's Hydrostatic Setting Tool (HST).

Option to install a Lower Junk Catcher Extension in high debris environments.

Applications

Well barrier during well maintenance and workover's.

Zonal isolation, water shut off or treatment.

Pre-installation in completion tail-pipe for packer setting.

Contingency packer setting.

Testing of production tubing(s).

Benefits

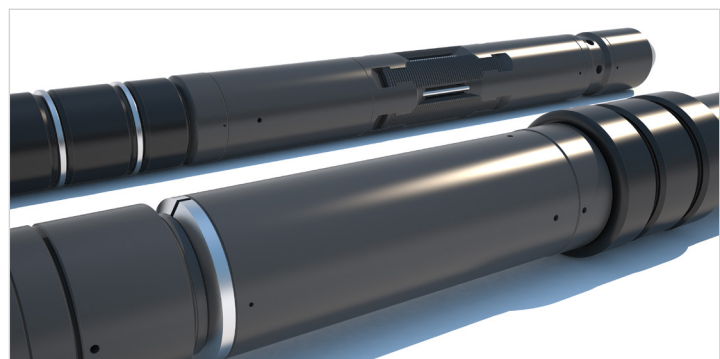
Increased operational performance due to setting and releasing mechanisms.

No specialized retrieval tool required, standard GS pulling tool used to equalise and retrieve.

Optimised slip design reduces stress loading on tubulars.

Controlled setting action, further enhanced with the Omega HST.

Through bore design provides secondary functionality and increased debris tolerance.





Technical Specifications

Retrievable Bridge Plug For 3-1/2" Tubing								
Bridge Plug Size	Plug OD	Casing Range	Plug ID	Plug Length	Flow Area	GS FN	Min Setting ID	Max Setting ID
3.50" V-Zero™	2.65in	9.2-10.2#	0.26in	72.8in	0.05in ²	2.50in	2.750in	3.046in

Retrievable Bridge Plug For 4-1/2" Tubing								
Bridge Plug Size	Plug OD	Casing Range	Plug ID	Plug Length	Flow Area	GS FN	Min Setting ID	Max Setting ID
4.50" V-Zero™	3.60in	12.6-15.1#	0.75in	78.7in	0.44in ²	3.50in	3.700in	4.028in

Retrievable Bridge Plug For 5-1/2" Tubing								
Bridge Plug Size	Plug OD	Casing Range	Plug ID	Plug Length	Flow Area	GS FN	Min Setting ID	Max Setting ID
5.50" V-Zero™	4.25in	17-28.4#	1.43in	81.4in	1.60in ²	3.50in	4.350in	4.976in
5.50" V-Zero™	4.35in	20-28.4#	1.43in	81.4in	1.60in ²	3.50in	4.450in	4.450in
5.50" V-Zero™	4.47in	17-28.4#	1.43in	81.4in	1.60in ²	3.50in	4.570in	4.570in

Retrievable Bridge Plug For 7" Tubing								
Bridge Plug Size	Plug OD	Casing Range	Plug ID	Plug Length	Flow Area	GS FN	Min Setting ID	Max Setting ID
7.00" V-Zero™	5.72in	29-35#	2.73in	87.72	5.85in ²	5.00in	5.820in	6.293in

Omega ISO 14310 V0 qualifies the V-Zero™ Retrievable Bridge Plug range to 5,000 psi @ 150° C - 4 ° C. Contact your omega representative for more specific and updated testing information.